



Mobile C-arm systems

BV Endura

Everything you want to see

PHILIPS

Everything you want to see

“It kept right up with us”





BV Libra



BV Endura

- versatile use
- vascular functionality
- 12" field of view
- extended rotation



BV Pulsera

The Philips BV family

BV Libra:
the routine compact. This system provides on-the-spot imaging for routine procedures, and is so small and easy to move that you forget it's even there.

BV Endura:
the versatile workhorse. Do routine and vascular procedures, without slowing down. And grow your revenue base along the way.

BV Pulsera:
the interventional powerhouse. Take on the most challenging dynamic imaging procedures and deliver your best work yet.

What are you looking for in a surgical imaging system? One that's versatile to use, easy to move, but hard to wear down? The Philips BV Endura gives you all that and more. This versatile workhorse can handle a full range of procedures, from routine to vascular. And as its name says, it has the endurance to keep pace with your most time-consuming procedures, so you can finish your job in one go.

Excellent maneuverability

When seconds count, you don't want to lose any time getting your C-arm where it's needed.

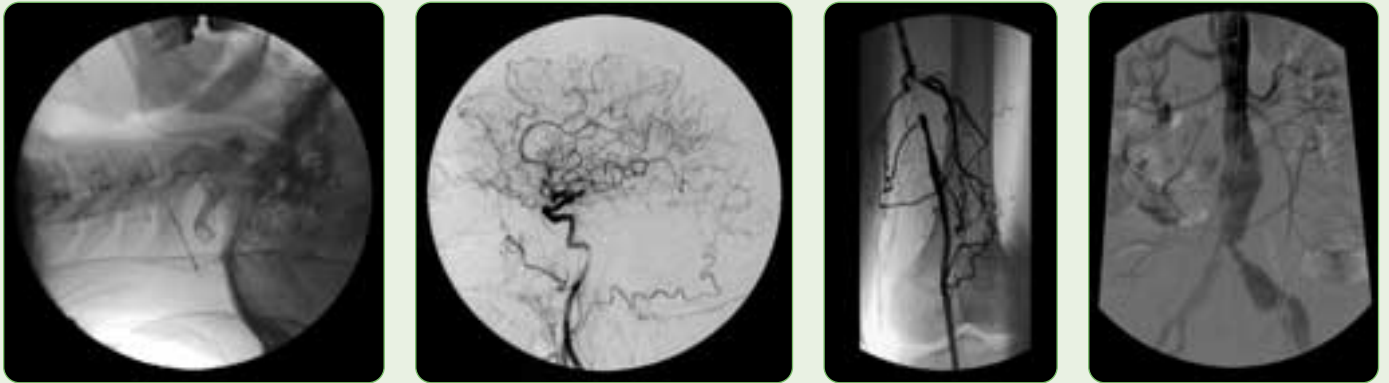
Thanks to the ultra compact foot in combination with the push bar/handles the BV Endura can be easily positioned with little effort.

Everywhere, every exam

This versatile system comes with a 9" or 12" image intensifier and goes anywhere you need it – surgery, intensive care, and emergency. And it can handle all your routine and specialized procedures:

- Orthopedic exams
- Pain management
- Cholangiograms
- Urological exams
- Neurosurgical exams
- Cardiac checks
- Vascular exams

Your best results, exam



In today's cost conscious healthcare environment, you need to get more out of your equipment than ever before. The BV Endura supports you every step of the way. Delivering excellent fluoroscopic diagnostic images to clearly monitor and evaluate an exceptional range of procedures.

Get the big picture

The 9" triple-mode image intensifier can handle all routine procedures. The 12" triple-mode image intensifier provides 70% more coverage than the 9" image intensifier, and is ideal for special and interventional procedures, covering stenting and grafting or abdominal exams equally well. Both image intensifiers feature Philips' optimized imaging chain that includes our Charge Coupled Device (CCD) technology and patented anamorphic lens. You get superior resolution and an outstanding level of coverage and detail visualization.

Get exceptional quality images

Our unique BodySmart software gives you the best image contrast, time after time. It finds, tracks, and precisely defines the field of view to anatomy

– no matter where it is on the image intensifier. And the Automatically Programmed Fluoroscopy (APF) parameters provide consistent image quality for every exam type.

Tailored to your viewing needs

Today Philips BV family systems can be tailored to your personal viewing needs by adding Philips flat screen LCD monitors on your Mobile View Station. These 18" flat screen monitors are mounted on a flexible arm, providing you with more imaging flexibility in the room. Next to the flat screen LCD monitors we have the choice of Standard or High End monitors..

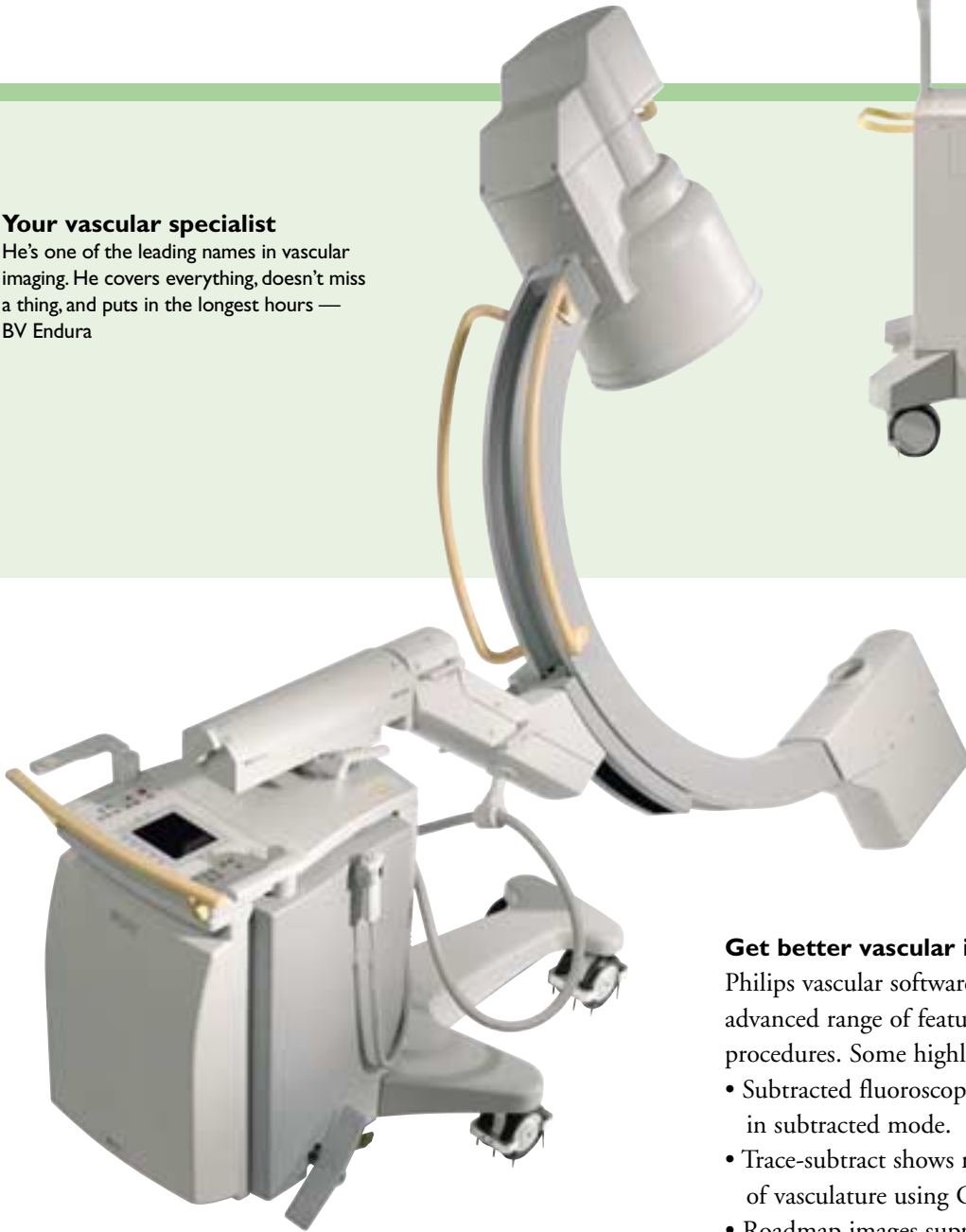
Get more imaging power

Philips highly efficient X-ray componentry gives you the power to go the distance in longer studies without worrying about overheating. Our advanced automatic high penetration mode gives you full contrast for the steepest projections, like lateral hip exams. Philips automatic movement detection also eliminates motion blurring to help you better view dynamic areas.

after exam

Your vascular specialist

He's one of the leading names in vascular imaging. He covers everything, doesn't miss a thing, and puts in the longest hours — BV Endura



Get better vascular images

Philips vascular software package offers the most advanced range of features to simplify vascular procedures. Some highlights:

- Subtracted fluoroscopy mode displays images in subtracted mode.
- Trace-subtract shows maximum opacification of vasculature using CO₂ or iodine contrast.
- Roadmap images support catheter guidance.
- Remask lets you reselect the best image in your run as a mask image for contrast runs.
- Landmarking highlights partial areas of images for reference.
- Real-time pixel shift compensates for movement artifacts.
- SmartMask reduces dose and contrast usage.
- Subtraction on/off simplifies subtraction exams.

“You really see the difference”



Protecting you and with

*“We’ve taken every
precaution for your safety”*



your patients Philips DoseWise



A number of unique Philips' features help drastically lower dose during procedures.



The dose report provides an overview of fluoro dose per mode.

Less is more with Philips

- **Unique beam filters reduce patient skin dose by 40% over conventional filters**
- **Independently movable lead shutters provide better radiation protection than semi-transparent shutters**
- **SmartMask reduces dose and contrast medium usage**
- **Adjust shutters and image orientation while on Last Image Hold without applying radiation**
- **Get real-time feedback on actual dose usage during exams**

Many medical imaging manufacturers talk about dose protection, but Philips Medical Systems builds it into their systems – from the ground up. With every new system, we look at how we can incorporate better shielding and improve our X-ray exposure to further reduce dose. That means before you even put on a lead apron, Philips has done their utmost to protect you and your patients from unnecessary dose. An especially important consideration for long procedures.

Less direct and scatter radiation

Philips unique beam filters reduce the patient skin dose by 40% over conventional filters. And Philips lead shutters can be rotated and moved independently of each other to provide real protection against direct radiation and reduce scatter radiation.

Less dose usage

Several options lower your overall dose usage during procedures. SmartMask saves dose and contrast medium by letting you re-use previously

acquired subtracted and non-subtracted images as masks for roadmapping. The laser aiming device projects a laser cross on the patient that corresponds to the center of the X-ray beam, letting you position the C-arm without applying radiation. And you can adjust shutters and image orientation while on Last Image Hold (LIH) without applying radiation.

More awareness

Another important way Philips can help protect your patients from dose is by helping clinicians become better informed about actual dose levels during exams. Philips mobile C-arms provide real-time feedback on actual dose usage and the effects of collimation and field of view on dose. So you can quickly take appropriate measures to adjust the amount of dose. We also provide a quantitative dose report after exams for recordkeeping.

The easiest way to get the best res



Select the field of view, vascular imaging modes, and most important review functions – all from the remote control.



Any position you need
The C-arm rotates a full 135° so you can easily make any projection needed for cardiovascular and pain management procedures.

When you're doing lots of different kinds of exams with different personnel, it's especially important to have an imaging system that's easy to use. The BV Endura is the latest in Philips line of humanware, designed to make work easier and more enjoyable for everyone that uses it.

Easier to use

The BV Endura can be quickly moved into place. Once there, the C-arm can be easily positioned. The stand's parallel movements ensure smooth, consistent imaging for peripheral angiography and ureter exams, to name a few. It even has a very low lateral working height that makes it ideal for lateral spine procedures.

Easier to control

The single-user concept of the BV Endura lets you control every step of minimally-invasive procedures. Use the footswitch to easily control fluoroscopy. Use the handheld remote to control imaging modes, and important imaging functions, like Trace-subtract, Subtraction, Roadmap, and SmartMask. Even the field of view can be remotely controlled.

Easier to operate

Handle a diverse case mix easily with the Anatomically Programmed Fluoroscopy (APF). Just a touch of the button selects the right parameters for the exam you are performing – whether it is a knee or a vascular exam.

ults

*Everything's easy to find.
Just press a button and go.*



Get smooth, consistent images over a large scanning range with the stand's parallel movements.



The large sturdy double front wheels easily glide over a variety of surfaces.



Feel safe with Philips



Philips invents for you

Philips invented the mobile C-arm in 1955 and has continued to open new possibilities for surgery:

- **First mobile C-arm**
- **First to introduce Last Image Hold**
- **First with CCD camera technology and anamorphic lens for better image clarity**
- **First 12" field of view for mobile systems**

Stay ahead of it developments

Add options and accessories at your pace to keep your Philips mobile C-arms up-to-date. Future upgrades can be easily incorporated, as you need them.

Accessories, like the paper/transparency printer, Video CD Recorder and the integrated laser alignment tool, can also help you work more efficiently. Of course, all of these extras can be easily accommodated in the BV Endura's Mobile Viewing Station for your convenience.

Stay efficient

Philips mobile C-arms have a fully integrated DICOM connectivity solution. This user friendly connectivity option meets your most demanding requirements such as:

- Full RIS/HIS compatibility allowing patient demographics to be imported into the BV family system, including Modality Performed Procedure Step (MPPS) to report examination status to the RIS/HIS, Modality Worklist Management and Storage Commit.
- Exporting single images or complete examinations onto your hospital network (printers, archives, workstations, etc.), where Storage Commit ensures reliable archiving of images. Images can be exported using a DICOM Secondary Capture or a DICOM XA format.

Stay productive

Philips has a range of tailor-made maintenance and support programs that will help you continue to get the most out of your equipment, long after your purchase. Application support and other customer support programs can keep your staff up to date on the latest clinical trends.



**Philips Medical Systems is part
of Royal Philips Electronics**

Interested?

Would you like to know more about our imaginative products? Please do not hesitate to contact us. We would be glad to hear from you.

On the web

www.medical.philips.com

Via e-mail

medical@philips.com

By fax

+31 40 27 64 887

By postal service

Philips Medical Systems

Global Information Center

I.B.R.S./C.C.R.I. Numéro 11088

5600 VC Eindhoven

Pays-Bas/The Netherlands

(no stamp required)

Asia

Tel: +852 2821 5888

Europe, Middle East, Africa

Tel: +31 40 27 63005

Latin America

Tel: +55 11 2125 0764

North America

Tel: +1 425 487 7000

© Koninklijke Philips Electronics N.V. 2004

All rights are reserved. Reproduction in whole or in part is prohibited without the prior written consent of the copyright holder.

Philips Medical Systems Nederland B.V. reserves the right to make changes in specifications and/or to discontinue any product at any time without notice or obligation and will not be liable for any consequences resulting from the use of this publication.

Printed in The Netherlands.

4522 981 86591/718 - 2004/03

