

# Technical Specifications

Model Name	ZEN-5000™
------------	-----------

FUNCTION	
Orbital Movement	135°
Wig-wag movement	± 12.5°
Vertical movement	40cm
Horizontal movement	20cm
Deep	68cm
Free Space	78cm
SID	100cm
Rotation	± 190°

GENERATOR	
Inverter Frequency	40 kHz
Power	2.2 kW
kV range on Fluoroscopy	40-110kV
mA range on Fluoroscopy	0.2-6mA
kV range on Radiography	40-110kV
Max value of radiography current	20 mA
mAs	0.4-100mAs
Boost Mode	10mA

TUBE	
Anode Heat Capacity (HU)	50,000
Small Focus	0.5 mm
Large Focus	1.5 mm
Anode Type	Stationary
COLIMATOR	Iris and Rot blades
Laser(Optional) Pointing	Yes

\* The specification above can be changed to improve performance.

I.I	9"
Monitor	19" (2 mon.)
Camera Type	CCD camera (1,000x1,000 pixel)

DIGITAL MEMORY, IMAGE PROCESSING	
	ZENIS system

DIGITAL MEMORY, IMAGE PROCESSING	
Image capacity	70,000
LIH	Yes
Image changing between monitors	Yes
Edge enhancement	Yes
Digital record mode	Yes
Zoom and roam	Yes
Negative-positive image	Yes
Cine Loop	Yes
Real time auto windowing	Yes

\* The specification above can be changed to improve performance.

Digital X-ray system maker, GENORAY Co.,Ltd.

#512 Byucksan Technopia 434-6, Sangdaewon 1-Dong,  
Jungwon-Gu, Seongnam-City, Gyeonggi-Do, KOREA  
TEL : +82-31-737-8020 FAX : +82-31-737-8025  
E-mail : genoray@genoray.com  
<http://www.genoray.com>

Genoray America Inc.

1073 N. Batavia St, Orange, CA 92867 USA  
TEL : 714-289-8020 FAX : 714-453-9661  
[inquiry@genoray.com](mailto:inquiry@genoray.com)

Genoray makes the invisible visible !



## High Performance Surgical C-Arm **ZEN-5000**

# High Performance Surgical C-Arm

## ZEN-5000

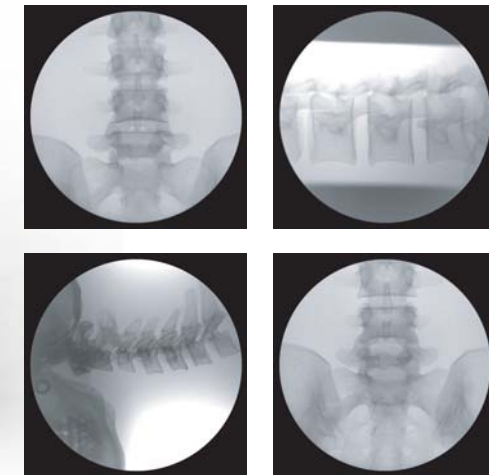
### Touch screen operation panel

- Easy control for shooting condition
- kV, mA control, saving image, image management, select part to shoot, collimator control, and etc.



### High Resolution 1M CCD Camera

1K x 1K high resolution CCD camera makes sharp and keen medical images, which make it very fit for the most superior hospital as the best C-Arm.



### Features

- Stationary anode tube
- Superior image quality through high definition image intensifier
- Large field of view and tri-field 9" image intensifier  
Auto brightness control
- Automatic shut-off to prevent overheated with error message
- Contrast ratio 30:1(10% area contrast)
- Noise reduction, edge enhancement, image rotation, positive/negative image, zoom, up/down/left/right image rotation.
- Virtual collimation
- 70,000 image capacity with ZENIS system
- DICOM 3.0 with ZENIS system
- Cine loop function with ZENIS system
- Easy collimation setting on control panel

